



# Medina County Solid Waste District

8700 Lake Road, Seville, Ohio 44273

(330) 769-0289 or (330) 769-3623

[recyclemedinacounty.com](http://recyclemedinacounty.com)

## Facility Hours:

Monday - Friday: 6:00 a.m. - 4:30 p.m.

Saturday: 7:00 a.m. - noon

**Closed:** New Year's Day, Memorial Day, Independence Day, Labor Day, Thanksgiving Day, Christmas Day

## Checks or Cash Only

**Make checks payable to:** MCSWD  
(Medina County Solid Waste District)

## No Charge Items



**Single Stream Recycling** - see website for "[Information About Recycling](#)"



**Yard Waste** - see website for "[Information About Yard Waste](#)"

**Appliances and Scrap Metal:** Discarded appliances must be metal (e.g. hot water tanks, stoves, dryers, microwaves and any other household appliances). For refrigerators, freezers, air conditioners or dehumidifiers, the refrigerant/Freon must be removed prior to disposal and tagged by a certified technician.

**Batteries:** For large lead-acid batteries (e.g. from automobiles, tractors or lawn mowers), place in the wooden box. Small household batteries can be placed in the drum.

**Computer Equipment and Mobile Devices:** Deposit computer equipment (towers, keyboards, mice, cords, printers) and cell phones.

**Used Motor Oil/Antifreeze:** Using plastic gallon jugs, place up to 10 gallons of used motor oil, antifreeze or cooking oil at the base of the oil container per visit. Do not pour used oil or antifreeze directly in the containers. Oil must be free of contaminants. NO GAS.

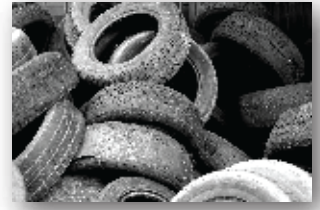
## Not Accepted

This facility does not accept concrete, rock, brick or blocks. These materials must be disposed of at the landfill. Contact Zollinger's at (330) 855-2464.

# 💰 Charge Items

**Tires:** Deposit only waste tires. Rims are not permitted.

- Tires up to and including 16.5" diameter (rim size) - \$1.50 per tire
- Large tires (tractor/trailer) - \$6.25 per tire
- Off road tires - \$26.50 per tire



**Bags of Trash:** Use this container for bags of trash only. Single bags are \$1.25/bag (35 lbs. max).

**Bulk/Loose Trash:** DO NOT PLACE BAGS OF TRASH IN THIS CONTAINER. Loose trash includes roofing materials, couches, carpeting and construction materials - \$2.10/100 lbs. (\$42/ton).

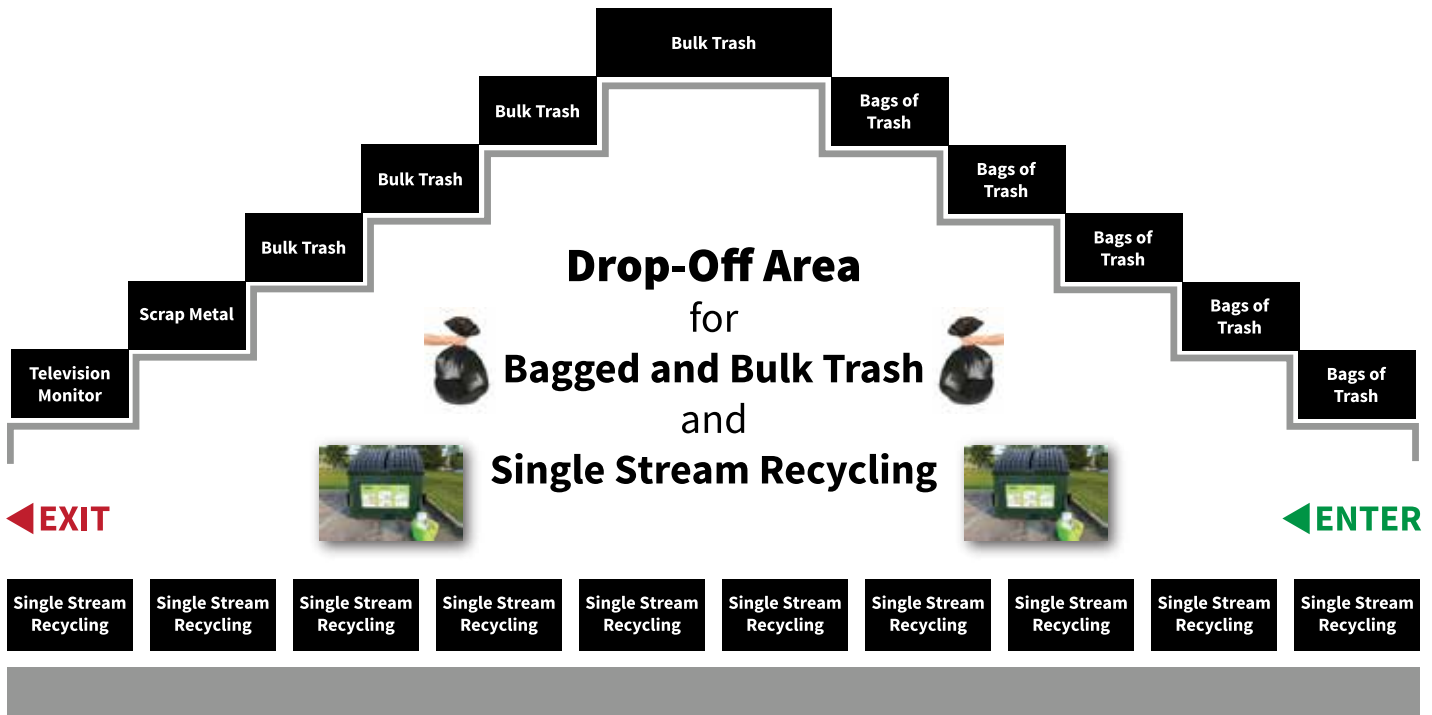
**Televisions and Monitors:**

- 19" or smaller - \$5.00 each
- 20" or larger - \$10.00 each
- Monitors - \$5.00 each



**Fluorescent Bulbs:**

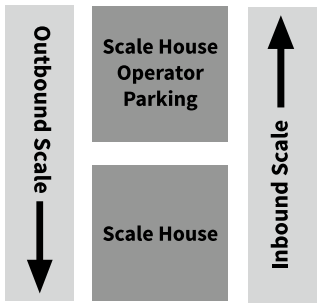
- High Intensity - \$1.25 each
- 4' Bulbs - \$0.35 each
- 8' Bulbs - \$0.55 each



**Yard Waste Drop-Off**



**Special Wastes:** Tires, Batteries, Fluorescent bulbs, Computer equipment, Motor oil, Antifreeze



**Drop-Off Location**  
8700 Lake Road, Seville, Ohio 44273

**Drop-Off Hours**  
Monday - Friday: 6:00 a.m. - 4:30 p.m.  
Saturday: 7:00 a.m. - noon  
(Cash or Check Only)

**Questions?** Please ask the scalehouse attendant or visit [recyclemedinacounty.com](http://recyclemedinacounty.com)

**YOU ARE HERE**

**\* ALL INBOUND VEHICLES MUST STOP AT SCALEHOUSE**